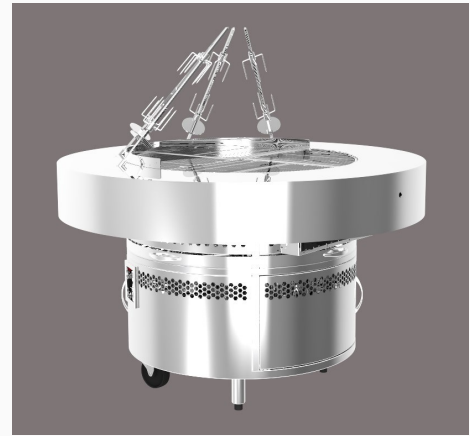




Custom Gas & Charcoal Grills

Made in AUSTRALIA 



MANUFACTURER	STYLE GLOBAL
MODEL	LHPCGG-1415C
PRODUCT DESCRIPTION	Gas High Performance Char Grill used to cook Red Meats, Poultry, Seafood, Vegetables and other Dishes.
COUNTRY of ORIGIN	Australia

Description	Magic Fish Circular Gas Char Grill — 1500mm Dia
Fuel Options	Full Gas or Charcoal Version Available (See separate specification)
Energy Requirements	Gas: LPG — 117.77 Mj/Hr / 111,642 Btu NAT —131.30 Mj/Hr / 124,448 Btu Electrical —N/A
Exhaust Requirements	Unit to be Installed Under Canopy/Hood (<i>supplied by others</i>), check with local requirements.
External Dims	1500mm dia x 900mm @ 240Kg
Packed Sizes & Weight	
Cooking Surface	Stainless Steel Quad Branding Grate , 4 x Angle Motorised Skewers Cooking Surface Area approx: 810mm dia.
MEP Ratings	Gas Connection: 2 x 19mm (3/4") Line Gas Flame Failure Safety Controls Fitted
Compliance	SAI Global Certification No: GAS40007
Warranty	1 Year Warranty includes Structural, Gas System & Components.
Manufacturer Materials	High quality stainless steel construction with heavy duty removable quad stainless steel branding grates, full flame failure controls, 4 angle motorised rotating skewers, heavy duty castors to rear and adjustable leg to front.

STANDARD FEATURES & OPTIONS

- High performance stainless steel burners fitted with individual high/low control.
- Stainless steel burner radiants which provide even heating, easily removable for cleaning.
- Heavy duty stainless steel quad branding grates (removable for easy cleaning).
- Stainless steel grate cleaning tool.
- 4 x Angled Motorised Rotating Skewers
- 250mm Extended Tray Race—Final Finish Diameter of 1500mm
- Removable fire proof grease collection tray.
- Gas flame failure safety device fitted to pilot tube.
- High quality stainless steel construction.
- Stainless steel adjustable legs.
- Optional extras available: smooth quad griddle plate.
- Various configurations and finishes available as options.

PROUDLY AUSTRALIAN MADE PRODUCT

